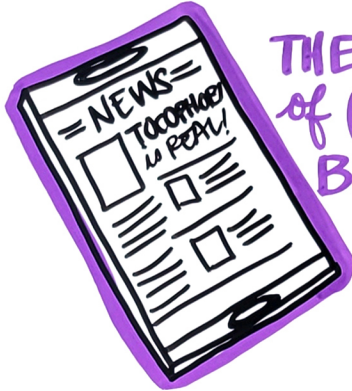


INEQUITY and

with
DR. DIVYA MALLAMPATI,
UNIVERSITY of CALIFORNIA -
SAN FRANCISCO



INEQUALITY



THE FEAR
of GIVING
BIRTH



MATERNAL
MORTALITY
and
MORBIDITY

CARDIO



CONGENITAL
DEFECTS

INFANT
MORTALITY
in the U.S.

SHOULDN'T BE
HAPPENING

VASCULAR
DISEASE is
COMMON

SHORT
GESTATION

MATERNAL
HEALTH

BLACK
WOMEN,
REGARDLESS
of EDUCATION,
EXPERIENCE
the HIGHEST RATES
of MORBIDITY or
MORTALITY... it DOESN'T
CHANGE the HIGHER the
EDUCATION LEVEL...

IT BECOMES
EXPONENTIAL

RISK

INEQUITY
EXISTS AT
ALL LEVELS
in MATERNAL
HEALTH-CARE

INEXTRICABLY LINKED
BABY'S HEALTH
is TIED to MOM'S HEALTH



STATES w/ABORTION
BANS HAVE HIGHEST MORTALITY

ABORTION CARE



HEALTH CARE