



Supporting Healthy Start Performance Project

Kick-off Webinar

Tuesday, August 27th 2019

Housekeeping

Meeting Logistics



- Session being recording, and archived for future viewing
- You may submit questions and comments into the chat box

Today's AGENDA

Topic	Speaker
Housekeeping	Tess Pritchard, SHSPP Project Specialist, NICHQ
Welcome from the Division of Healthy Start and Perinatal Services	Tiffany Wiggins, MD, MPH, Division Director
Introductions : NICHQ & NHSA	Kenn L. Harris, Senior Project Director, NICHQ Deborah Frazier, CEO, National Healthy Start Association Kelley Devlin, Senior Project Manager, NICHQ
Overview of NICHQ's Approach to SHSPP	Kenn L. Harris, Senior Project Director, NICHQ
Technical Assistance Request Process	Kelley Devlin, Senior Project Manager, NICHQ
Questions & Answers	All

Welcome from the Division of Healthy Start and Perinatal Services

Tiffany Wiggins, MD, MPH, Division Director





Introductions: NICHQ & NHSA

Kenn Harris, Director, SHSPP

Deborah L. Frazier, CEO, NHSA



Scott D. Berns, SHSPP Co-Principal Investigator
National Institute for Children's Health Quality
President and Chief Executive Officer



Deborah L. Frazier, SHSPP Co-Principal Investigator
National Healthy Start Association
Chief Executive Officer



Brandy Payne
SHSPP Program Coordinator



Kenneth Scarborough
SHSPP Fatherhood Coordinator



Dr. Arthur James
Women's Health and Equity Advisor



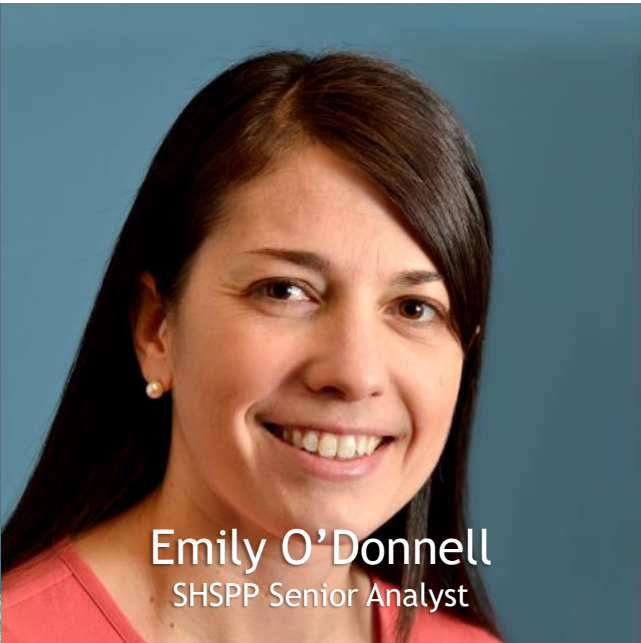
Kenn Harris
SHSPP Project Director



Kelley Devlin
SHSPP Senior Project Manager



Tess Pritchard
SHSPP Project Specialist

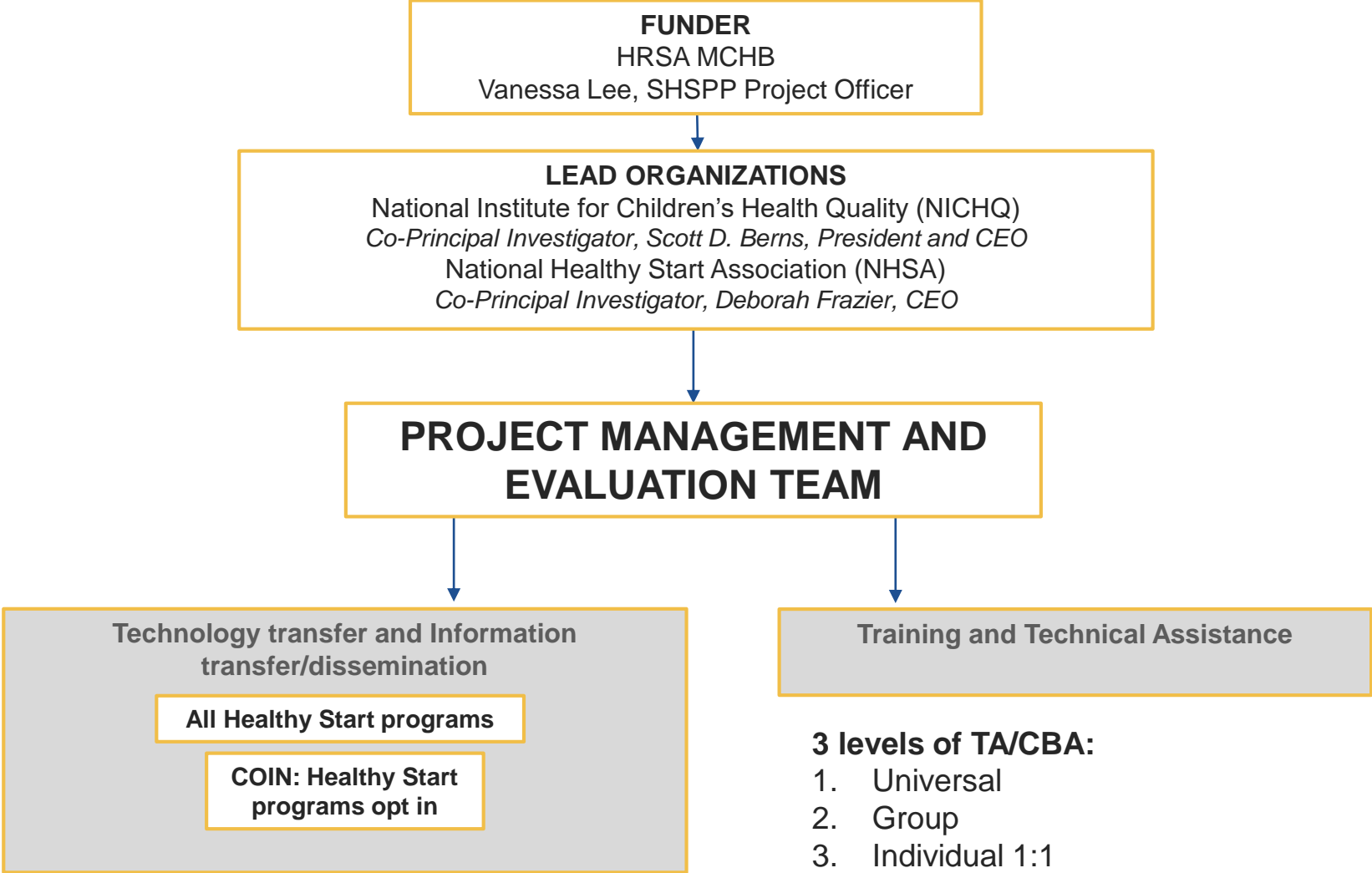


Emily O'Donnell
SHSPP Senior Analyst



Overview: Our Approach to Supporting Healthy Start

Project Structure



HRSA MCHB DHSPS → Lead Organizations
NICHQ & NHA → **Healthy Start Performance Grant
SHSP**

Vanessa Lee, Project Officer

S. Berns, Co-Principal Investigator
NICHQ President & CEO
D. Frazier, Co-Principal Investigator
NHA, CEO

Project Director
Sr. Project Manager
Project Manager
Project Specialist
Sr. Analyst
Analyst
Senior Program Manager
Program Coordinator
Fatherhood Coordinator

**Faculty Planning
Committee**

**Subject Matter Experts
Faculty**

**TECHNOLOGY TRANSFER and INFORMATION
transfer and dissemination**

ALL Healthy Start Programs
COIN: Healthy Start programs
opt in

TRAINING and TECHNICAL ASSISTANCE

3 levels of TA/CBA:
Universal
Group
Individual 1:1

Increased capacity of Healthy Start programs to implement, align and measure effectiveness of service delivery

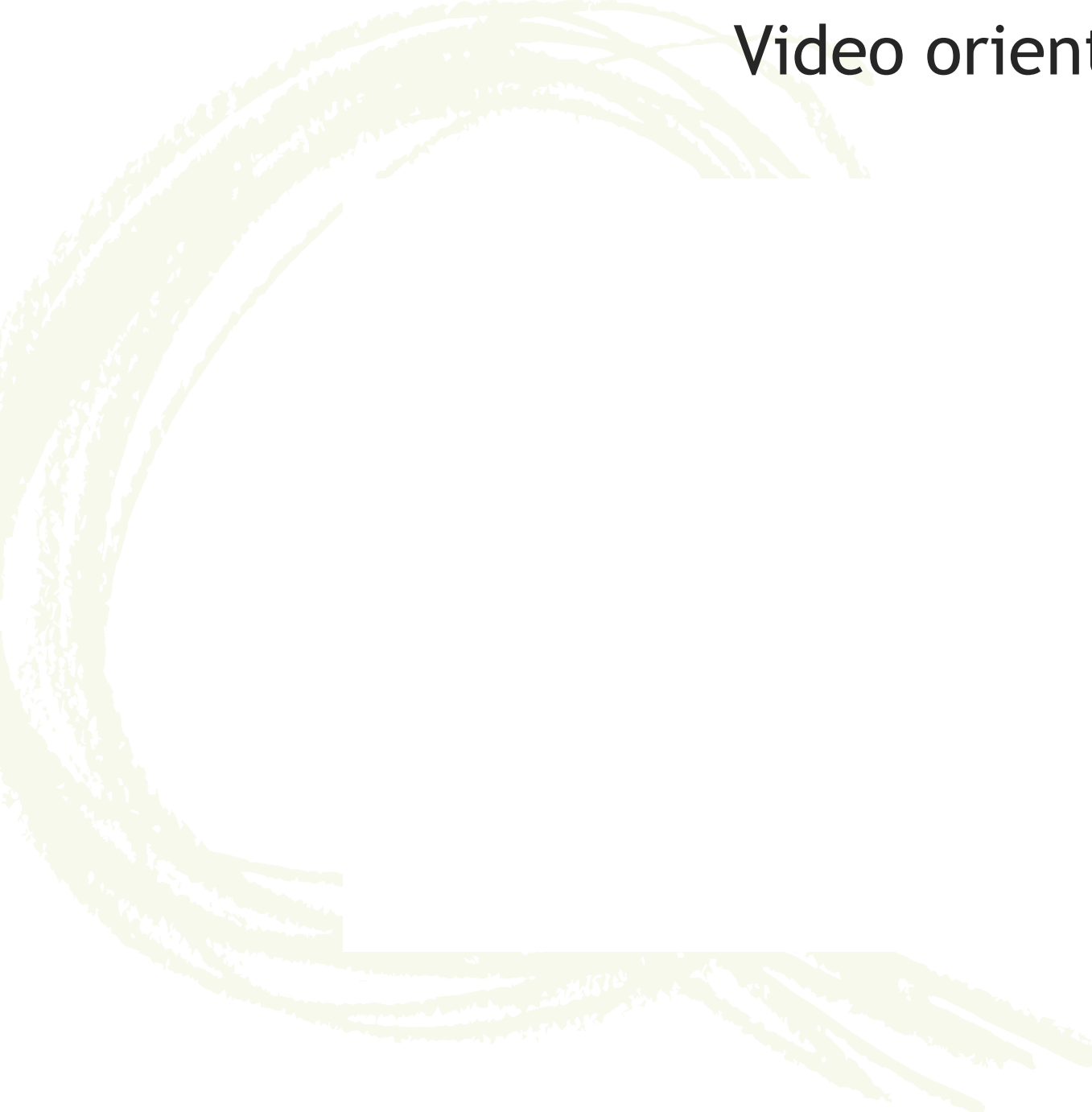
IMPROVED OUTCOMES IN HEALTH AND WELL-BEING





The Division of Healthy Start and Perinatal Services
continues to fund EPIC Center to provide you with
training and technical assistance

Video orientation





Healthy Start EPIC Center



A National Training and Technical Assistance Center operated by NICHQ with funding from HRSA

HEALTHY START

HS IMPLEMENTATION

TRAINING & EVENTS

RESOURCES

HS STAFF ROLES

HS EPIC CENTER

HEALTHY START COMMUNITY HEALTH WORKER COURSE



**All modules now open to
all Healthy Start Grantees!**

The Healthy Start EPIC Center provides training, consultation, and technical resources to community-based agencies working to give every child a healthy start. Healthy Start grantees can request technical assistance and receive help achieving their program goals.

[Request TA](#)

Existing Resources

Outreach and Educational Tools

Outreach and Educational Tools

Evidence Based Practices

MCH Organizations

Project Director's Guide & Project Management Hub

Healthy Living

Maternal Mortality Prevention

Communications is a key part of the day-to-day operations and the long-term sustainability of Health Start programs. On this page, the HS EPIC Center provides tools and ready-made templates to help you reach your communications goals.

Ready-Made Materials

Remember...
Perinatal depression and anxiety are common health conditions that need to be treated.
You are not alone.
With help, you can feel better.

Who to Call for Help
Save the phone numbers of your doctor, nurse or midwife on hand.
Perinatal Support International
800-955-4773 or Text: 303-686-8622
For support and local resources.
National Maternal Mortality Prevention Hub
1-800-275-5623
To call for a crisis counselor (24/7) about any mental health issue.

Depression and Anxiety During and After Pregnancy
What every mother should know

Depression & Anxiety During and After Pregnancy for Moms – Online Version

Depression & Anxiety During and After Pregnancy for Moms – Print Version

Who to Call for Help
Save the phone numbers of your doctor, nurse or midwife on hand.
Perinatal Support International
800-955-4773 or Text: 303-686-8622
For support and local resources.
National Maternal Mortality Prevention Hub
1-800-275-5623
To call for a crisis counselor (24/7) about any mental health issue.

Depression and Anxiety During and After Pregnancy
What fathers, partners, families and friends should know

E-News

(Revamped and Re-introduced)

e-News

EPIC Center Services

Contact Us

Request Technical Assistance

e-News

The JSI Healthy Start EPIC Center “Tips, Tools, & Trainings” was a weekly newsletter for Healthy Start grantees. It provided resources to support programs to prevent infant mortality by achieving program goals. Each issue highlighted a selection of articles, tools, websites, reports, and data addressing Healthy Start grantee program needs.

See [e-news archive](#) for prior issues.

Supporting Healthy Start Performance Project NEWSLETTER



Tagline Coming Soon!

A Greeting from Kenn Harris, SHSPP Project Director

Greetings, Healthy Start Grantees:

The Supporting Healthy Start Performance Project (SHSPP) Team here at the National Institute for Children's Health Quality (NICHQ) is excited to work with you over the next five years to provide technical support and capacity building assistance.

I am happy to lead the team as the Project Director but more excited to think about the partnership that we will build together. Your SHSPP team is committed to delivering a high level of support that effectively aids your work to improve pregnancy and birth outcomes. The grants that each of you received also have a provision to include the fathers of Healthy Start participants. In a way, this positions us as a maternal and child health program that will be able to tell a story that illustrates a broader picture of families! We know that we will learn much from you and we hope that we successfully facilitate many opportunities for you to learn from each other.

We are also excited to partner with Deborah Frazier, CEO of the National Healthy Start Association. She and NICHQ CEO Scott D. Berns, MD, MPH, FAAP, will serve as the principal investigators on this grant, providing leadership from two organizations that understand the breadth of the work that Healthy Start programs do across the country. We are excited to embark on this journey with you and we are thrilled to begin it with the introduction of this newsletter! Enjoy!

Vote for a Tagline!

We're really excited to spend the next five years building a partnership with you. That's why we're asking you for your help in choosing a tagline that fits who we are as the Healthy Start team! Click the button to vote by Monday, August 26, and choose the tagline that best represents what inspires you and fuels your work on behalf of children and families.

Vote now!

Healthy Start EPIC Center

The SHSPP team at NICHQ is working to update and improve the [EPIC Center](#), a hub for training and technical assistance for all Healthy Start grantees. Be sure to check out all the resources that are available to Healthy Start teams nationwide!

News and Upcoming Events

Next week!

Kick-Off Webinar: Meet the New Healthy Start TA Center

On **Tuesday, August 27, from 1-2 pm ET**, NICHQ and our partners at NHSA will host a kick-off webinar to introduce the TA Center team. We'll share an overview of our plans for the short and long term to support all Healthy Start programs with TA and trainings.

Recommended Participants: Project Directors encouraged; all are welcome. If you are unable to attend live, this call will be recorded and shared on the EPIC Center website.

Inventory of Evidenced-based Practices

Evidence-Based Practices

Inventory of Evidence-Based Practices (EBPs) for Healthy Start Programs

Evidence-based practices include actions, activities, strategies, or approaches that improve the health of women, before, during, and after pregnancy in order to improve birth outcomes and give infants up to age two years a healthy start. Also included in the collection are informational materials and tools that make it easier to implement evidence-based practices. To search by title, use the main search box located at the top of this page.

Most Recently Added EBPs:

Number of results: 216

Updated Immunization Schedule for Children and Adolescents Aged 18 Years or Younger



In February 2019, ACIP updated its immunization guidelines for children and adolescents. The revised guidelines are available in two newly redesigned charts, one for providers and one for parents. They include new or revised recommendations for hepatitis A vaccine (HepA), hepatitis B vaccine (Hep B), influenza vaccine, and tetanus toxoid, reduced diphtheria toxoid, and acellular pertussis vaccine (Tdap), as well as clarification of the recommendations for inactivated poliovirus vaccines (IPV).

Topics:

Immunization

Filter by Topics

Alcohol/Drug Services

Breastfeeding

Case Management/Care Coordination

Chronic Disease

Depression

Father/Partner Involvement

Health Equity

Health Literacy

Healthy Weight

Home Visiting

Immunization

Insurance Coverage

Intimate Partner Violence

Project Management Tools

Project Director's Guide & Project Management Hub

Outreach and Educational Tools

Evidence Based Practices

MCH Organizations

Project Director's Guide & Project Management Hub

Scope

Human Resources

Budget

Schedule

Communication

Quality

Grants Management & Contracting

Risk

Healthy Living

Maternal Mortality Prevention

Welcome to the Project Director's Guide and Project Management Hub. The Hub is a dynamic repository of information and resources to help you manage your Healthy Start program. These resources can help your program reach Healthy Start goals to reduce disparities in infant mortality and adverse perinatal outcomes by:

1. Improving women's health,
2. Improving family health and wellness,
3. Promoting systems change, and
4. Assuring impact and effectiveness through workforce development, data collection, quality improvement, performance monitoring, and evaluation.

Successful project performance involves both providing high quality, effective services to participants and satisfying programmatic expectations established by the Maternal and Child Health Bureau (MCHB), Division of Healthy Start and Perinatal Services (DHSPS).

The Hub focuses on eight areas of project management: Scope, Human Resources, Budget, Schedule, Communication, Quality, Contracting, and Risk.

Scope

Human Resources

Budget

Staff Development Packages

Healthy Start Staff Meeting Training Packages

These Healthy Start Staff Meeting Training Packages provide everything you need for a short (under an hour) staff development activity that you can do with your entire Healthy Start team during a staff meeting or other team meeting.

Breastfeeding Practice Brief

HEALTHY ENERGY EPIC CENTER
EPIC
Healthy Start Grantee Perspectives
Protecting, Promoting, and Supporting Breastfeeding

14 Interviews between
March 15 and April 5, 2022

Lactation Counselors on staff or
affiliated with 14 Healthy Start programs

How to Increase Breastfeeding Initiation and Duration:
Key Themes from the Interviews

- Increase Healthy Start participants' knowledge about breastfeeding.
- Support and encourage breastfeeding women and families.
- Normalize breastfeeding as it is seen in the community.

Social Determinants of Breastfeeding
The conditions in which we live, learn, work, and play are significant to our well-being. These interpersonal and environmental factors, known as the social determinants of health, affect our behavior and health outcomes, including breastfeeding. This practice brief describes what Healthy Start lactation counselors have seen in the field as factors that make it harder to breastfeed (barriers) and factors that support breastfeeding (facilitators). These factors are the social determinants of breastfeeding (summarized at all four levels of the Social Ecological Model (SEM): individual, interpersonal, community, and societal.

This practice brief describes what Healthy Start lactation counselors have seen in the field as factors that make it harder to breastfeed (barriers) and factors that support breastfeeding (facilitators). It can be used with the [Increasing Breastfeeding Initiation and Duration Discussion Guide](#) and [Breastfeeding Resources for Healthy Start Programs](#) for a short staff development activity that you can do with your entire Healthy Start team during a staff meeting or other team meeting.

Staff Meeting Training Package: Promoting Women's Health to Prevent Maternal Mortality



This Staff Meeting Training Package provides everything you need for a short (under an hour) staff development activity that you can

Performance Resource Sheets

Screening Tools

Screening Tools

Training and TA

Development Process

Approaches

Monitoring, Data, and Evaluation

Thanks to the collective efforts of [Healthy Start CoIIN members](#), [MCH Bureau officers](#), [JSI/EPIC Staff](#) and Healthy Start grantees, together we have developed and refined a set of standardized, evidence-based screening tools that will substantially improve our ability to document our participants' needs for care coordination and satisfy our required reporting. These screening tools received official OMB approval in November 2016 and are ready for implementation. The Healthy Start EPIC has created opportunities to [assist you with implementation](#).

Screening Tools for Data Collection through March 2019

HRSA has given the HS EPIC Center permission to post the OMB approved versions of these tools here for easy access.

Current versions of the screening tools are available below. A complete list of updates to the tools is available in the [Table of Updates](#). The date of each change is noted in this document. No substantive changes will be made to the screening tools that may affect data collection or reporting after March 2017.

Since March 2017, EPIC has received a number of questions from grantees implementing the tools which benefited from clarification. In response, selected instructions have been updated to provide clarity. None of these clarifications affect the data collection or the data export but they do ensure that all grantees are interpreting questions consistently.

The EPIC Center is maintaining a list of enhancements to the tools that require IRB approval. If you have comments or changes, you are encouraged to contact EPIC and they will record the proposed change.

Community Health Worker Course

Healthy Start Community Health Worker Course

Training Calendar

Regional Meetings

Community Trainings

Breastfeeding Initiative

Alcohol & Substance-Exposed
Pregnancy Prevention

Collective Impact PLN

Healthy Start Community
Health Worker Course

Healthy Start CHW Course
Part 1 - Table of Contents

Healthy Start CHW Course
Part 2 - Table of Contents

CHW Course Badges

CHW Roles and
Competencies

Companion Guide for
Supervisors

Registration

HEALTHY START

COMMUNITY HEALTH WORKER COURSE



Course Information

The Healthy Start Community Health Worker (CHW) Course provides baseline (introductory) training toward the achievement of [perinatal health competencies](#) and [core competencies](#) needed to fulfill the roles and responsibilities of a CHW in the Healthy Start program.

This self-paced online course was developed for the Healthy Start EPIC Center by JSI in collaboration with the CHW Course Advisory Group, which included representatives of Healthy Start grantee programs, the Division of Healthy Start and Perinatal Services, and community health workers practicing in Healthy Start programs.

Audience

CHWs working in Healthy Start programs, whether they are directly employed or subcontracted by the Healthy Start program.

CHWs (trusted, frontline but usually non-licensed staff who work directly with participants) go by many names in local Healthy Start programs, including navigator, parent advocate, family educator, male involvement coordinator, fatherhood engagement specialist, and outreach worker, among others—and this course is for all of them.

While the primary audience of the course is CHWs, it is open to any Healthy Start staff

Requesting TA



Healthy Start EPIC Center



A National Training and Technical Assistance Center operated by NICHQ with funding from HRSA

HEALTHY START

HS IMPLEMENTATION

TRAINING & EVENTS

RESOURCES

HS STAFF ROLES

HS EPIC CENTER



The Healthy Start EPIC Center provides training, consultation, and technical resources to community-based agencies working to give every child a healthy start. Healthy Start grantees can request technical assistance and receive help achieving their program goals.

Request TA

Meet the new TA Center Webinar: NICHQ and our partners at NHSA will host a kickoff webinar to introduce the TA Center team (August 27 1 - 2 pm ET)





Q for questions?



NICHQ



Communications

Thank you!

Contact information:
healthystart@nichq.org



Tess Pritchard, SHSPP Project Specialist

Kenn L. Harris
kharris@nichq.org

Kelley Devlin
kdevlin@nichq.org